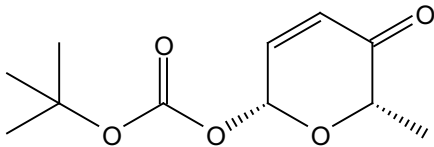


(1H, 500 MHz)



**5**

7.26 cdd13

6.90

6.89

6.88

6.87

6.37

6.22

6.20

4.39

4.38

4.37

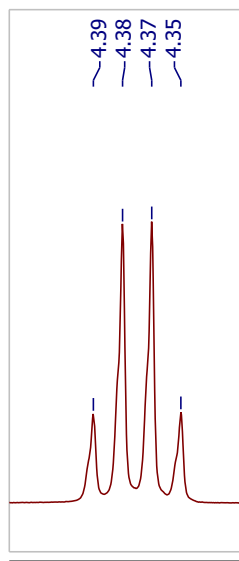
4.35

1.52

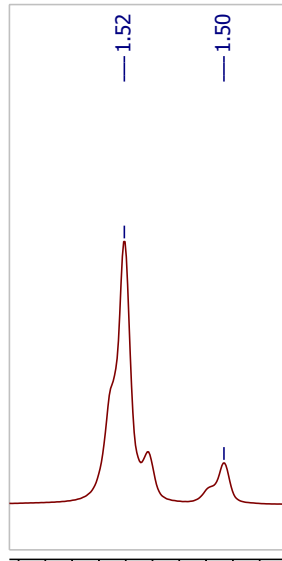
1.50



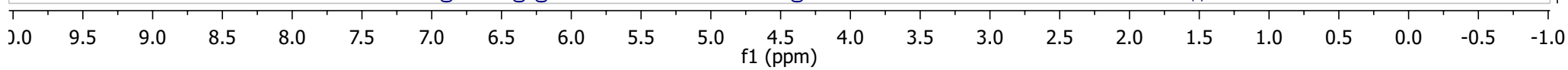
6.90 6.88  
f1 (ppm)



4.40 4.35  
f1 (ppm)



1.53 1.51 1.49  
f1 (ppm)



0.92

0.84

0.89

0.90

12.00